



MASTERPIECES

MARBLE COLLECTION



DESIGNED EXCLUSIVELY FOR



THE ULTIMATE CONCEPT IN FIREPLACE DESIGN

These are the most advanced marble suites available today. Produced using our new Seamless Joining Method means they appear to be made from solid blocks of marble. They have been designed to sit against a flat wall with no rear opening required.

Available in a choice of Micrograin marble colours with the addition of Quartz inlays as shown.

We have designed the range to suit the Celsi and DLX electric fires which include all the latest smart technology, allowing you to adjust the flame effects to suit your mood.



AVAILABLE IN A CHOICE OF MICROGRAIN MARBLE COLOURS

Blanco Perla



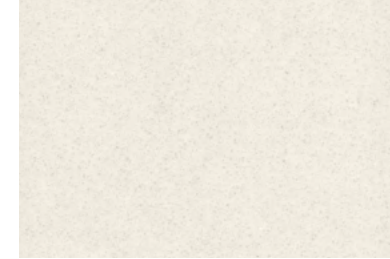
Giorgioni



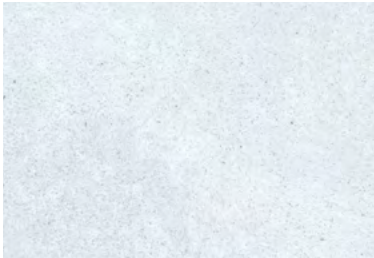
Marfil



Oriental White



Polar White



Roman Stone



Ice Flow

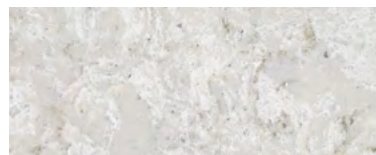


Vanilla

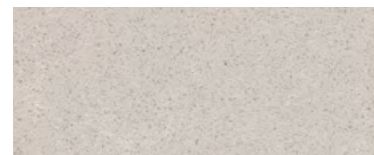


ADDITIONAL INLAYS (AVAILABLE ON SELECTED MODELS)

Irini (Quartz)

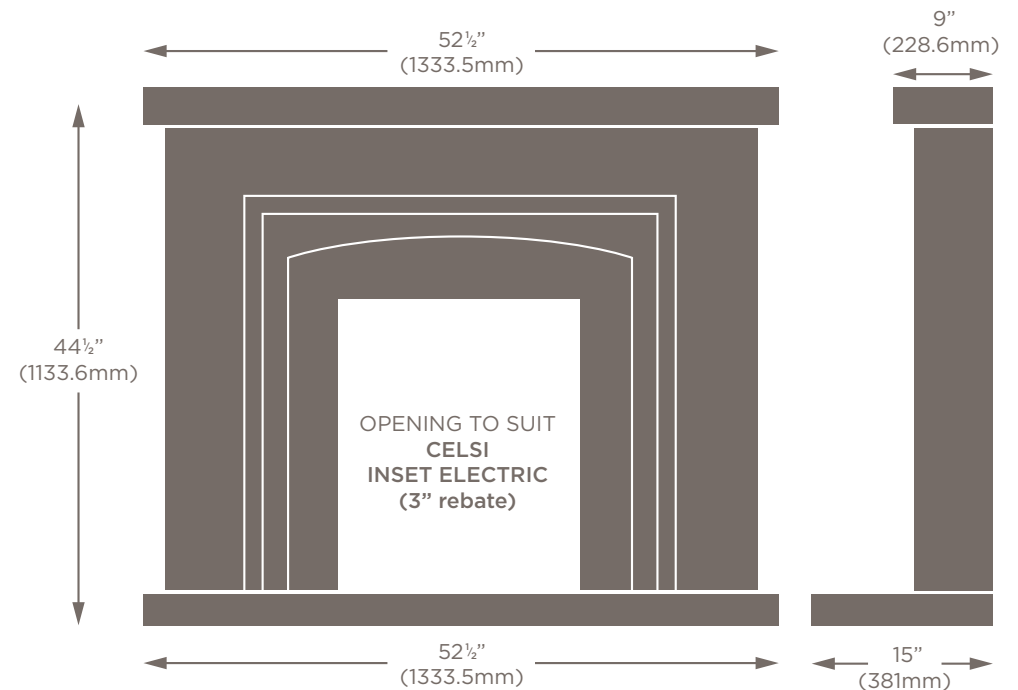


Giorgioni (micrograin marble)



THE CAMBERWELL SUITE

- Fireplace shown in Oriental White marble with Giorgioni inlays
- Available in all eight marble colours
- Available with inlays in either Giorgioni marble or Irini Quartz
- Fire shown is the Celsi VR Inset electric



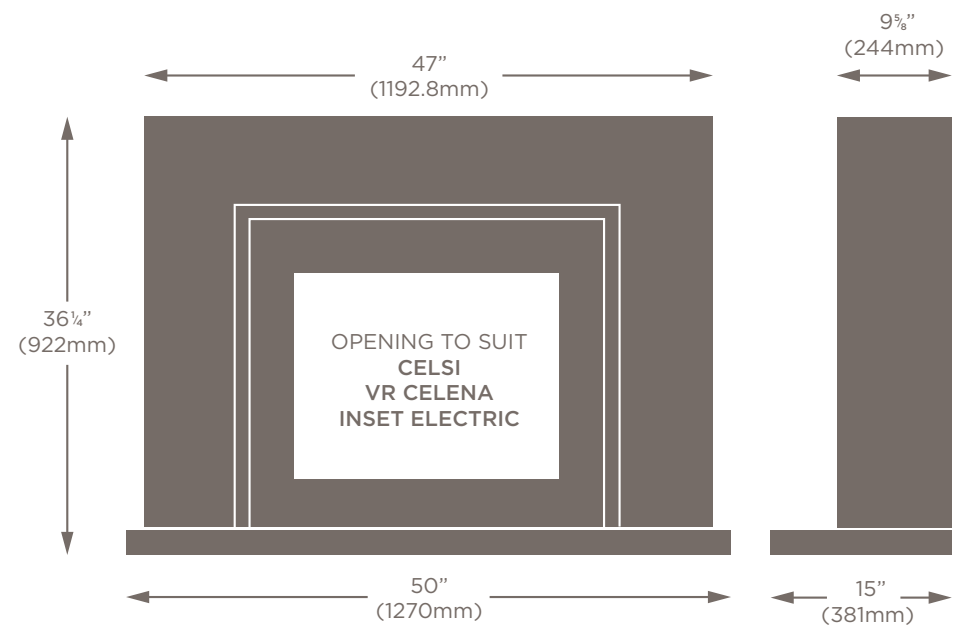


THE CAMBERWELL SUITE

DESIGNED EXCLUSIVELY FOR  CELSI  DLX FIRES

THE CHESTER SUITE

- Fireplace shown in Oriental White marble
- Available in all eight marble colours
- Available with inlays in either Giorgioni marble or Irini Quartz
- Fire shown is the Celsi VR Celena Inset electric



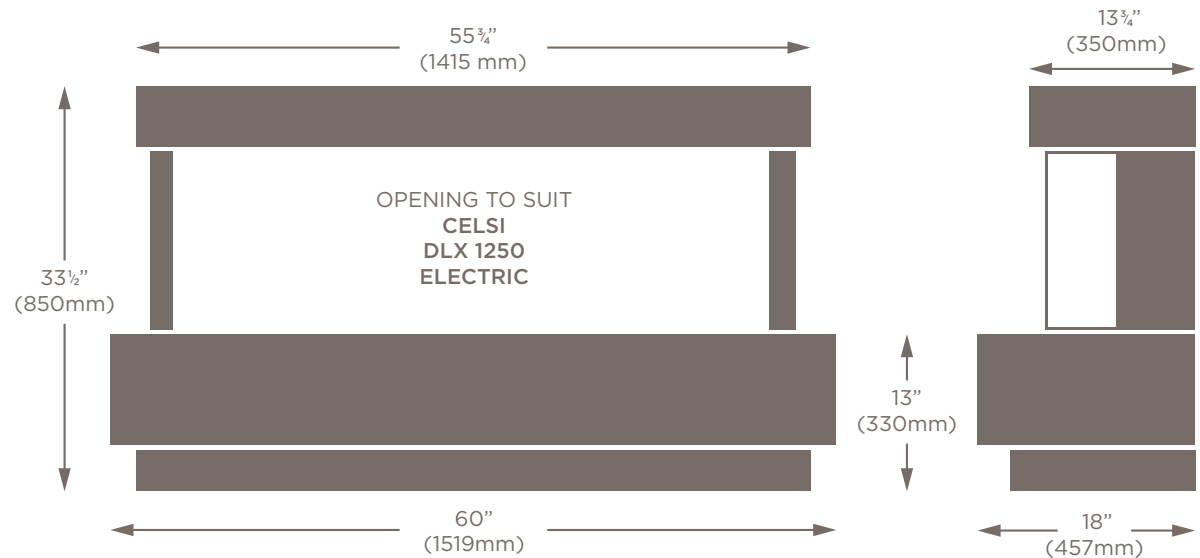


THE CHESTER SUITE

DESIGNED EXCLUSIVELY FOR  CELSI  DLX FIRES

THE EDMONTON SUITE

- Fireplace shown in Oriental White marble with Giorgioni
- Available in all eight marble colours
- Available with inlays in either Giorgioni marble or Irini Quartz
- Fire shown is the Celsi DLX 1250 electric (also available to suit Celsi DLX 1600)



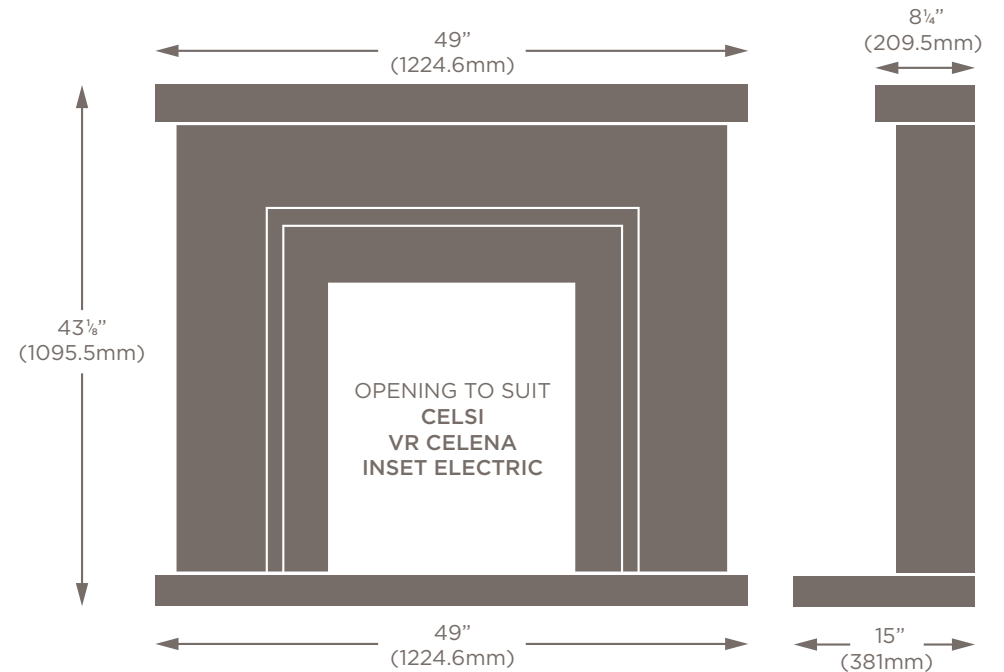


THE EDMONTON SUITE

DESIGNED EXCLUSIVELY FOR CELSI DLX FIRES

THE FINSBURY SUITE

- Fireplace shown in Vanilla marble
- Available in all eight marble colours
- Available with inlays in either Giorgioni marble or Irini Quartz
- Fire shown is the Celsi VR Celena Inset electric



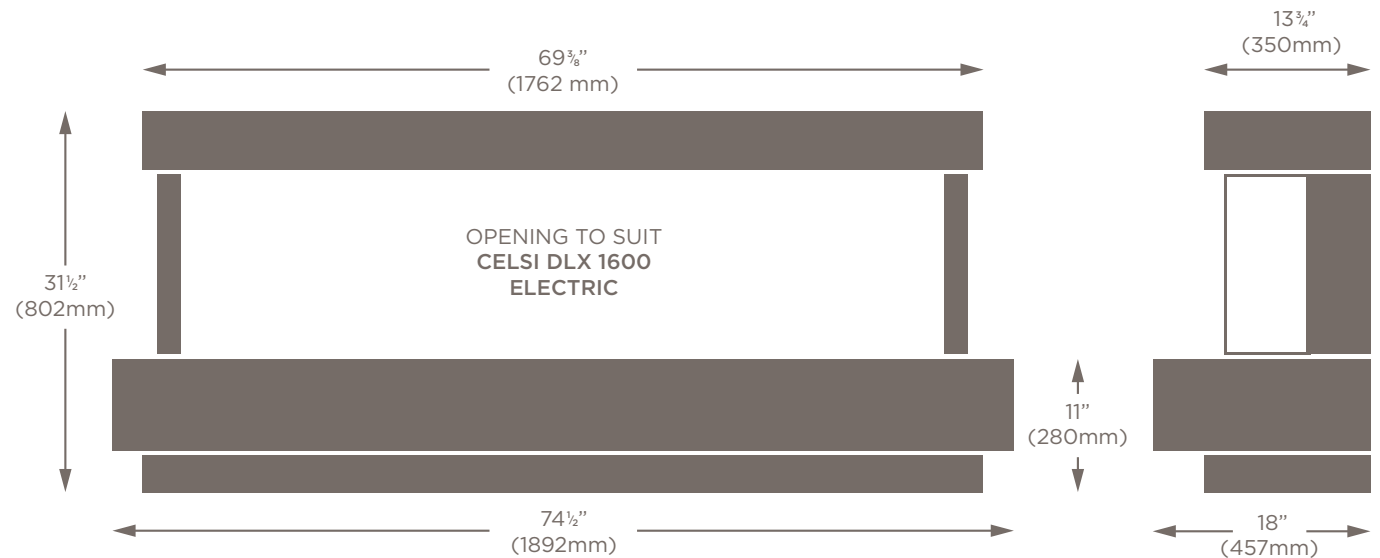


THE FINSBURY SUITE

DESIGNED EXCLUSIVELY FOR  CELSI  DLX FIRES

THE GREENWICH SUITE

- Fireplace shown in Oriental White marble with Giorgioni
- Available in all eight marble colours
- Fire shown is the Celsi DLX 1600 electric (also available to suit Celsi DLX 1250)



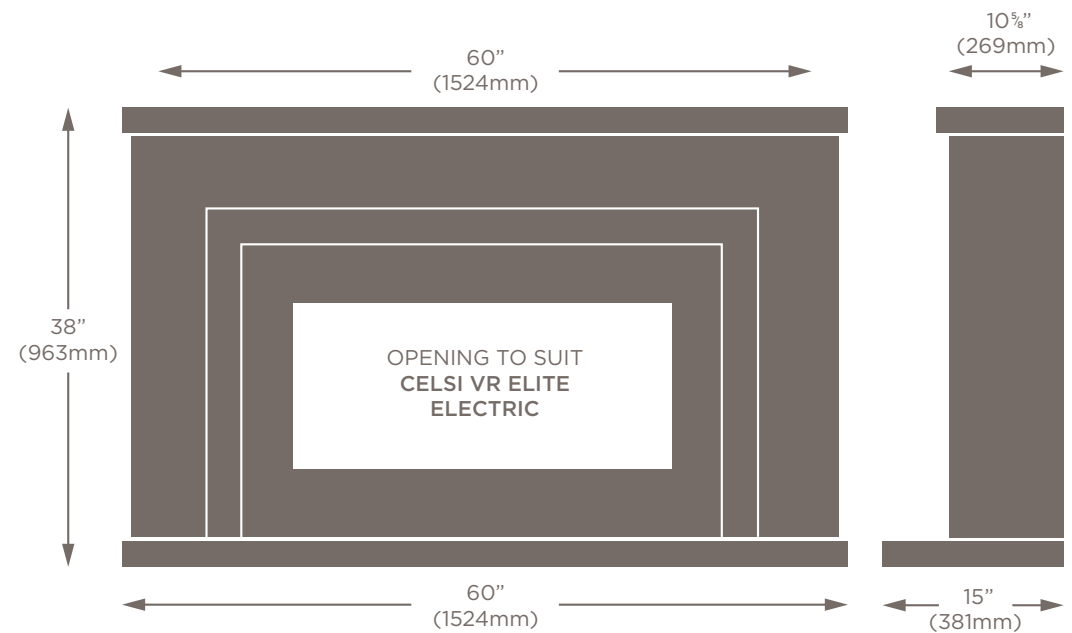


THE GREENWICH SUITE

DESIGNED EXCLUSIVELY FOR  CELSI  DLX FIRES

THE KENSINGTON SUITE

- Fireplace shown in Oriental White marble with Irini Quartz inlays
- Available in all eight marble colours
- Available with inlays in either Giorgioni marble or Irini Quartz
- Fire shown is the Celsi VR Elite electric



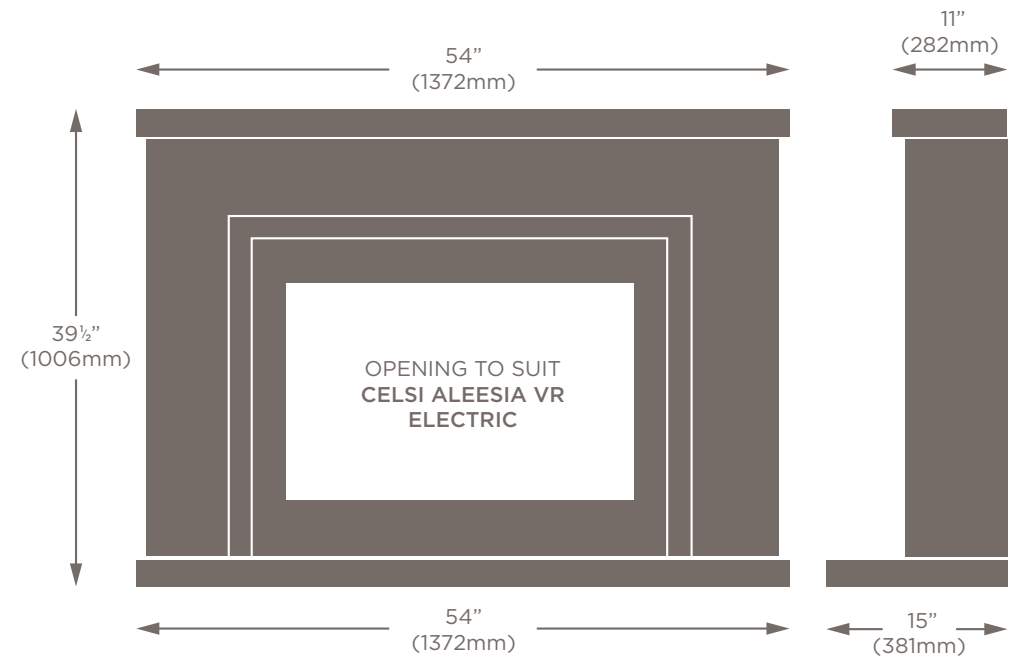


THE KENSINGTON SUITE

DESIGNED EXCLUSIVELY FOR  CELSI  DLX FIRES

THE KNIGHTSBRIDGE SUITE

- Fireplace shown in Oriental White marble with Irini Quartz inlays
- Available in all eight marble colours
- Available with inlays in either Giorgioni marble or Irini Quartz
- Fire shown is the Celsi VR Aleesia electric



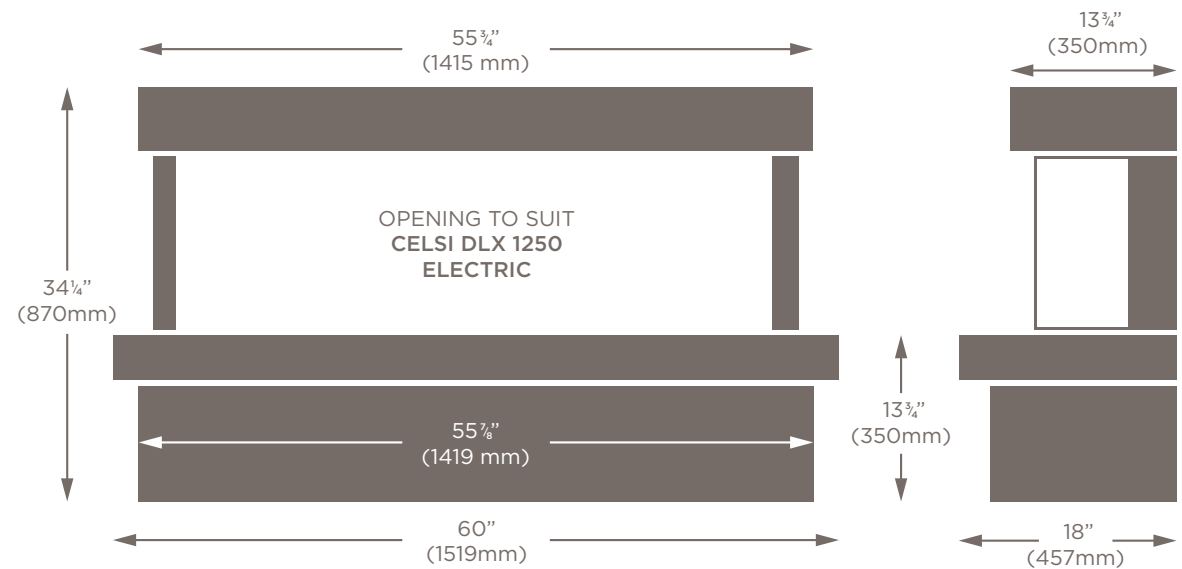


THE KNIGHTSBRIDGE SUITE

DESIGNED EXCLUSIVELY FOR  CELSI  DLX FIRES

THE STRATFORD SUITE

- Fireplace shown in Vanilla marble
- Available in all eight marble colours
- Fire shown is the Celsi DLX 1250 electric (also available to suit Celsi DLX 1600)



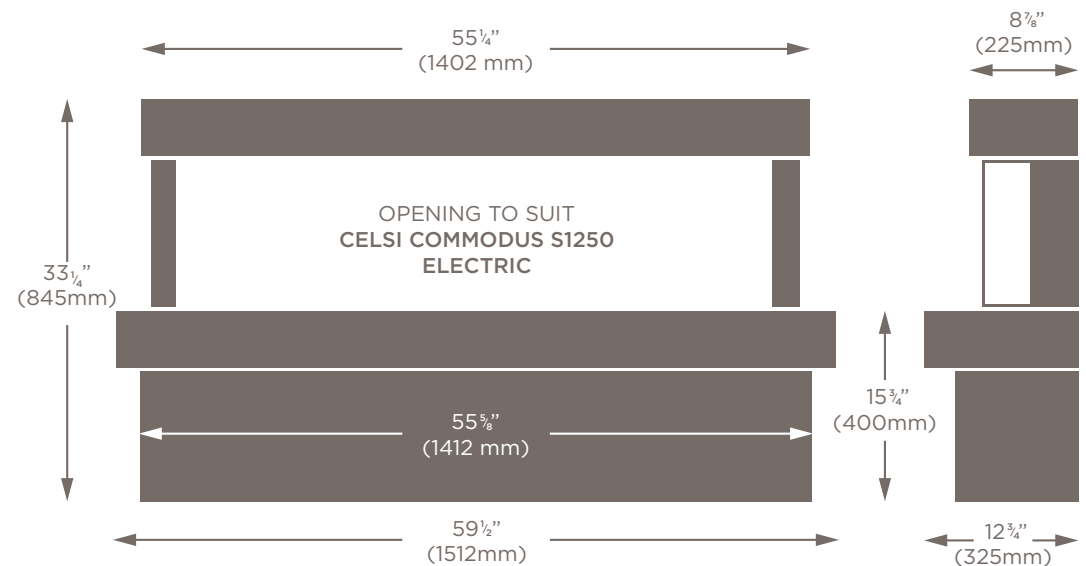


THE STRATFORD SUITE

DESIGNED EXCLUSIVELY FOR   FIRES

THE TRAFALGAR SUITE

- Fireplace shown in Polar White marble
- Available in all eight marble colours
- Fire shown is the Celsi Commodus S1250 (also available to suit Celsi Commodus S1000 & Celsi Commodus S1600)



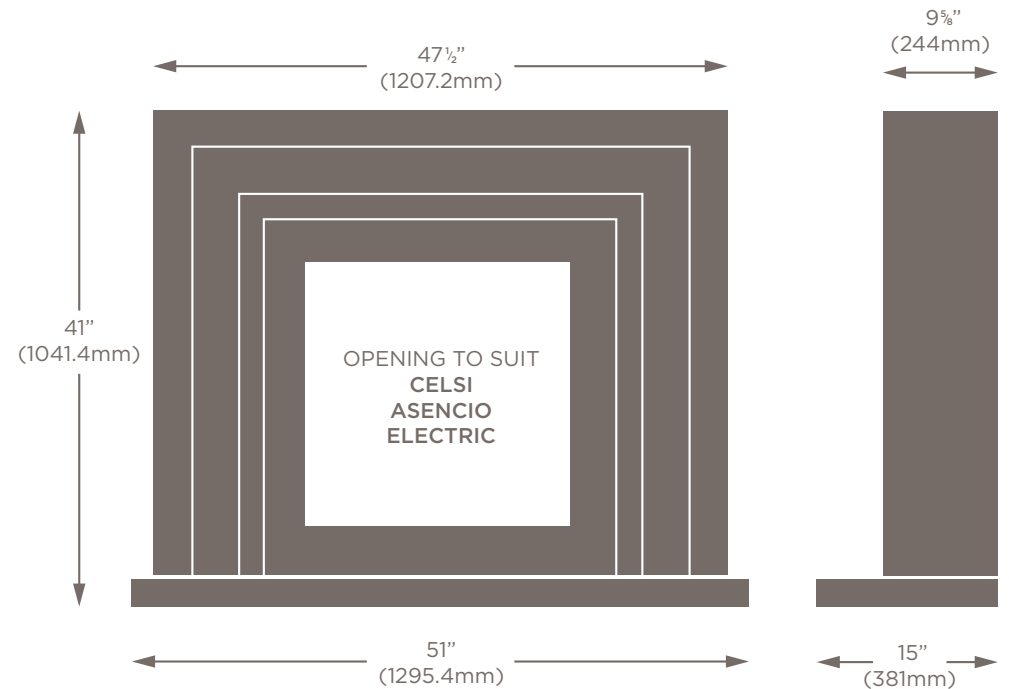


THE TRAFALGAR SUITE

DESIGNED EXCLUSIVELY FOR   FIRES

THE WESTMINSTER SUITE

- Fireplace shown in Oriental White marble with Irini Quartz inlays
- Available in all eight marble colours
- Available with inlays in either Giorgioni marble or Irini Quartz
- Fire shown is the Celsi Ascenio electric





THE WESTMINSTER SUITE

DESIGNED EXCLUSIVELY FOR  CELSI  DLX FIRES

YOUR LOCAL DISTRIBUTOR:



MASTERPIECES

DESIGNED EXCLUSIVELY FOR



FIRES